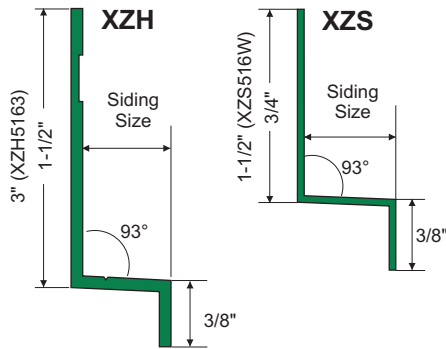


XtremeTrim® Horizontal Z



EXTRUDED ALUMINUM

PRODUCT DETAIL:



ITEM ID	MAX REVEAL	SIDING SIZE	LTH
XZS5168	1/4"	5/16" (8mm)	8'
XZS516W	1/2"	5/16" (8mm)	10'
XZS7168	1/4"	7/16" (11mm)	8'
XZS588	1/4"	5/8" (16mm)	8'
XZH516	1/2"	5/16" (8mm)	10'
XZH5163	2-1/2"	5/16" (8mm)	10'
XZH716	1/2"	7/16" (11mm)	10'
XZH58	5/8"	5/8" (16mm)	10'
XZHT516	1/2"	5/16" (8mm)	30"

DESIGN FEATURES: Provides clean and consistent horizontal transition between panels.

XZH - Designed to work in conjunction with XtremeTrim® Vertical Reveal and Siding H-Mold.

XZH5163 - Design affords greater reveal flexibility up to 2-1/2" while working in conjunction with XtremeTrim® Vertical Reveal and Siding H-Mold.

XZS - True size designed as an independent profiles.

MATERIAL: XZH 6063 T-5 .050" (1.27mm) ± .005, XZS 6063 T-5 .030" (0.76mm) ± .005 extruded aluminum alloy with proprietary coating that protects against harsh weather conditions and allows for paint adhesion.

FINISH: Unless specified all XtremeTrim® items are provided in primed finish. Also available in popular siding/soffit colors in standard face only color match or full coverage CoastalColorCoating™. **XZH** - Clear Anodized is stocked and custom anodized is available (minimums apply).

FASTENERS AND FASTENING: Stainless steel fasteners are recommended. XtremeTrim® profiles may be secured in place with a few SS nails until fastened through panels and into studs during panel or plank fastening per siding manufacturer's instructions.

CUTTING & PAINTING: Use a non-ferrous carbide miter saw blade when cutting XtremeTrim®. Use Direct To Metal (DTM) paint when jobsite painting. See painting guide.

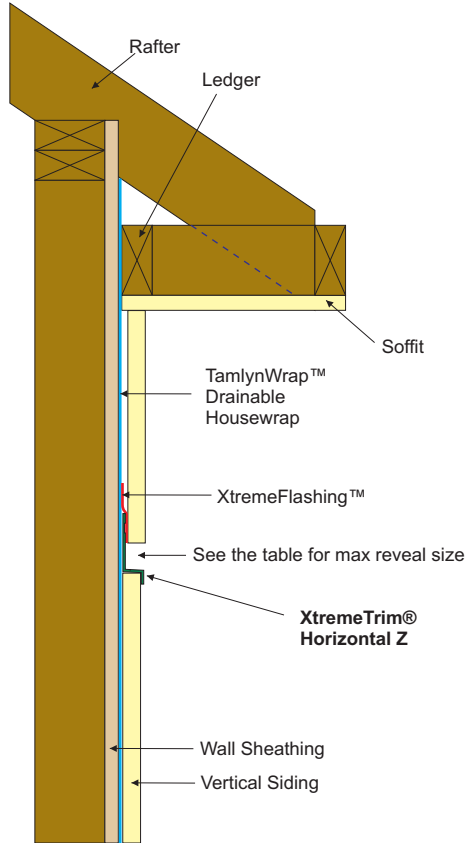
XTREMETRIM® BUTT JOINT: Sealant is required between butt joints where two trims come together. May also be further protected by use of a piece of XtremeFlashing™ behind the butt joint or with a metal flasher behind the joint.

NOTE: Do not install XtremeTrim® Horizontal Z on horizontal applications where the exterior flange can catch water.



RECOMMENDED APPLICATION NOTES:

Please follow siding manufacturer's best practice guides when installing. XtremeTrim® profiles DO NOT form a moisture management system. The architect and builder are responsible for designing and installing a code compliant building envelope. Before installing XtremeTrim® use either a drainable housewrap or a standard housewrap with a rainscreen system if required by code or siding manufacturer.



Horizontal Z Termination Piece: Pre cut ends for termination into outside or inside corner trims. One end has left hand cut with the other end having a right end cut.

XZHT516

