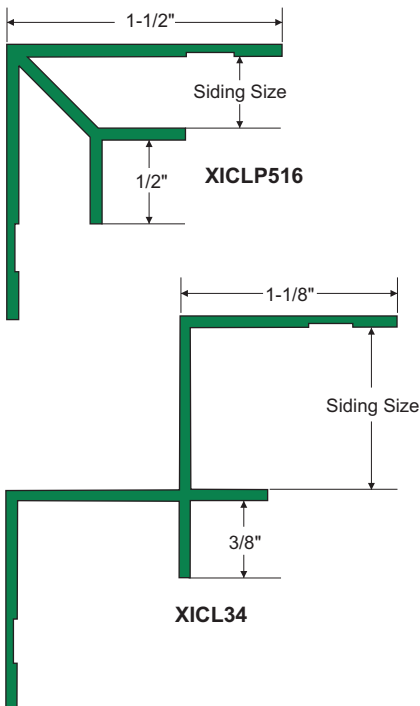


# XtremeTrim® Low Profile Inside Corner



## EXTRUDED ALUMINUM

### PRODUCT DETAIL:



ITEM ID	SIDING SIZE	LENGTH
XICLP516	5/16" (8mm)	10'
XICLP34	3/4" (19mm)	10'

**DESIGN FEATURES:** Minimal face produces a clean, pleasing durable inside corner for siding panels or lap siding.

**MATERIAL:** 6063 T-5 .050" (1.27mm) ± .005 extruded aluminum alloy with proprietary coating that protects against harsh weather conditions and allows for paint adhesion.

**FINISH:** Unless specified all XtremeTrim® items are provided in primed finish. Also available in popular siding/soffit colors in standard face only color match or full coverage CoastalColorCoating™. Clear Anodized is stocked and custom anodized is available (minimums apply).

**FASTENERS AND FASTENING:** Stainless steel fasteners are recommended. XtremeTrim® profiles may be secured in place with a few SS nails until fastened through panels and into studs during panel or plank fastening per siding manufacturer's instructions.

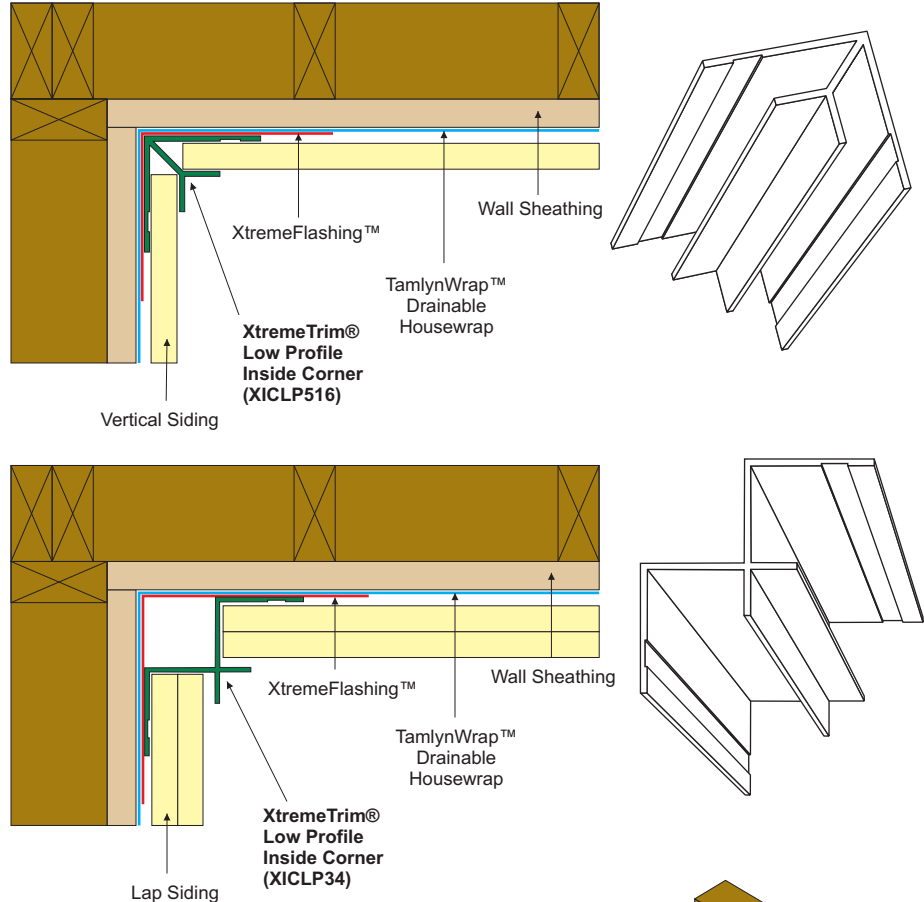
**CUTTING & PAINTING:** Use a non-ferrous carbide miter saw blade when cutting XtremeTrim®. Use Direct To Metal (DTM) paint when jobsite painting. See painting guide.

**XTREMETRIM® BUTT JOINT:** Sealant is required between butt joints where two trims come together. May also be further protected by use of a piece of XtremeFlashing™ behind the butt joint or with a metal flasher behind the joint.

### RECOMMENDED APPLICATION NOTES:

Please follow siding manufacturer's best practice guides when installing. XtremeTrim® profiles DO NOT form a moisture management system. The architect and builder are responsible for designing and installing a code compliant building envelope. Before installing XtremeTrim® use either a drainable housewrap or a standard housewrap with a rainscreen system if required by code or siding manufacturer.

**BEST PRACTICE FOR CORNERS:** Install a continuous strip of housewrap from bottom to top, overlapping per manufacturer's install requirements. Install a 12" self-adhesive membrane tape vertically at corners for additional protection.



### RECOMMENDED APPLICATION:

If more than one length is required, refer to the following for overlapping instructions.

